

ALUMINIUM COLOURS AND PRICING

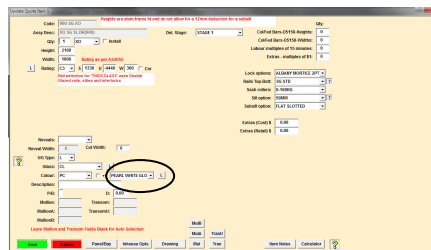
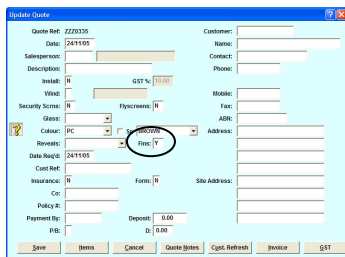
The pricing field in the quotation setup of QuoCut Professional corresponds to the price book issued by Crane. You will need to refer to the Price Book for colours that fall into each of the categories listed below.

MILL FINISH	Blank field
PC	PC PRIMARY (Standard Powder Coat Finish)
PC-SEC	PC SECONDARY
PC-TERT	PC TERTIARY
PC-SPEC	PC SPECIAL (Special Powder Coat Finish)
ANODISED	Various Anodised pricings and codes

Note: To price any item in mill finish (MMRAW) the pricing colour field should be left blank. The question mark beside the colour box gives more information as to selections for pricing.

1. Pricing field and colour description field

The quote and item screens shown below indicate the options available for colour. Whatever option is chosen in the colour field the description of the selection will default in the next drop down field.



At this point the user may select from the drop down list a colour description applicable to the quoted item. The selections chosen on the quote screen will default to the item screens, but may be updated at any time by individual item.

2. Pricing and description options

To ensure items are calculated accurately you will need to select the correct pricing option for powder coat or anodizing. The pricing option is selected from the first colour drop down box and then the applicable colours will display in the next field.

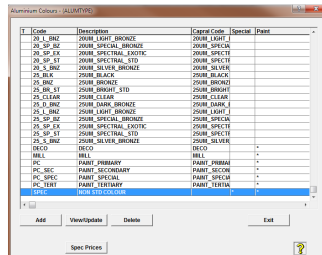
3. Customised special powder coat finishes

The user may set up special powder coat options based on a square metre or lineal metre basis. A special colour is selected when extrusions are purchased as mill finish and a third party powder coats the metal.

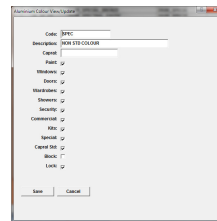
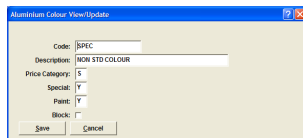
Note: The selection of square metre or lineal metre is performed in the menu – System Configuration / System Options.

ALUMINIUM COLOURS AND PRICING

3.1 Setting up a special colour Select the following menu option - **Setup | Aluminium Colours (Pricing)**



- Use the **Add** button to add another colour; the code should be meaningful.



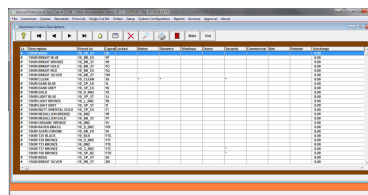
- Select the **Special, Paint** and **Capral Std** fields as well as all other fields you would like this colour to be applied to (see above).
- **DO NOT** select Block or the colour will not be available to price.
- **Save** to go back to the Aluminium Colours screen.
- Use the **Spec Prices** button to record the \$ per sq / lineal mt.

4. Aluminium Colour Descriptions

The user may modify product availability to suit individual requirements. The initial defaults are based on Capral's nominated colours per product.

4.1 Modifying product availability

- Select the menu option – Setup | Aluminium Colour Descriptions
- Select the View/Modify icon



- Select the product required and then select lock to ensure the selection will not be updated with any upgrades to the program.