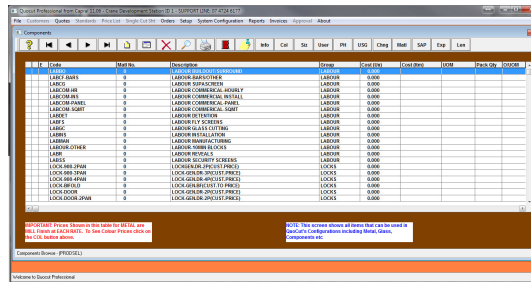


LABOUR – COMMERCIAL

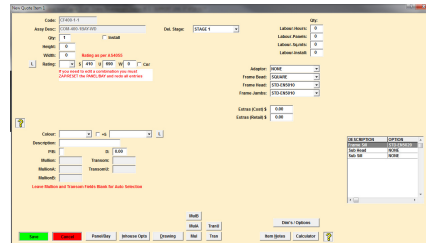
1. Setting up costs for commercial labour

Labour is defined in commercial structures by component options in the stock file. To set up values for these components:

- Select the menu option Setup | Components
- Then select the search function by Code and type LAB – this will display all options for labour costing
- Select the relevant labour component and then View/Update to add a value:
 - LABCOM-HR – An hourly rate
 - LABCOM-INS – Rate for installation if required
 - LABCOM-PANEL – Rate that can be charged per panel
 - LABCOM-SQMT – Rate per square metre of the structure



2. Labour in commercial structures



	Qty:
Labour-Hours:	0
Labour-Panels:	0
Labour-Sq.mts:	0
Labour-Install:	0

The commercial structures allow for labour costs to be added at the time of entering the item. Labour can be added by completing the quantity field for any or all of the components as required. All quantities applied to a labour field will be multiplied by the value that has been added to the stock file (Section 1 above):

- Labour-Hours (the number of hours required to fabricate the structure)
- Labour-Panels (the number of panels in the structure)
- Labour-Sq.mts (the total square metres in the structure)
- Labour-Install (the number of hours for installation)

3. Labour for combinations inserted into panels

For any combinations inserted into a panel, the labour for these will be determined by the labour times set up for each configuration and the relevant values in the stock file.