

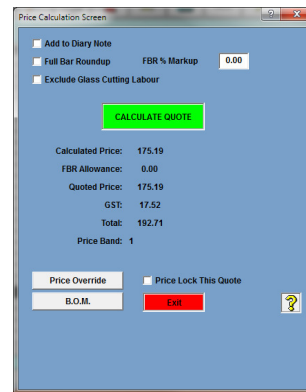
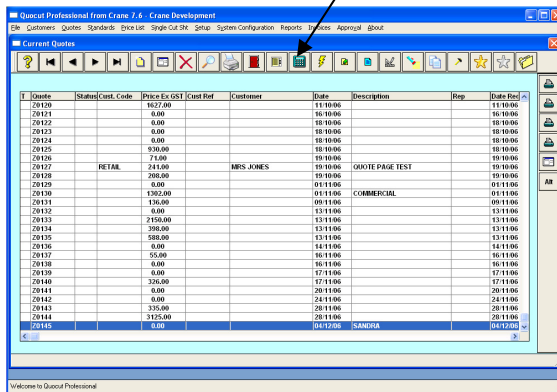
QUOTATIONS – CALCULATING

A quotation can be calculated on the item screen or on the quotation screen.

1. CALCULATING A QUOTATION FROM CURRENT QUOTES

To calculate a quotation from the current quotes screen proceed as follows:

- Select Quotes | Current
- In the Current Quotes screen highlight the quotation to be calculated
- Select the calculator icon and then select Calculate Quote

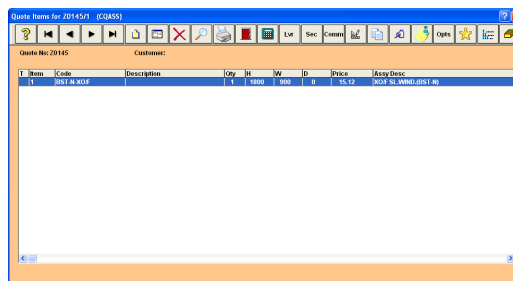
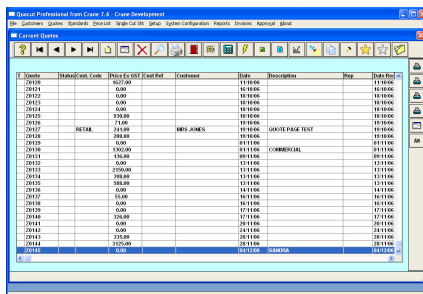


- When the quotation is calculated select B.O.M. to view individual pricing or EXIT to return to the quotation screen.

2. CALCULATING A QUOTATION FROM QUOTE ITEMS

To calculate a quotation from the quote items screen, proceed as follows:

- Select Quotes | Current | Items
- In the Current Quotes screen highlight the quotation to be calculated
- Select the quote items icon



- Select the calculator icon and then select 'Calculate Quote'
- When the quotation is calculated select B.O.M. to view individual pricing or EXIT to return to the quote items screen.