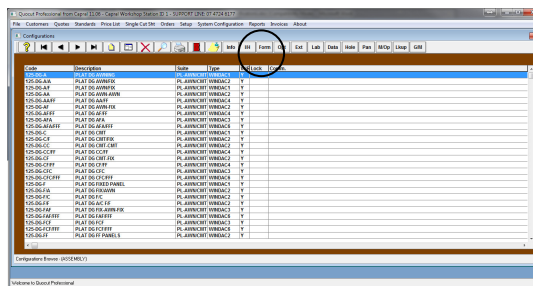


MODIFYING FORMULA

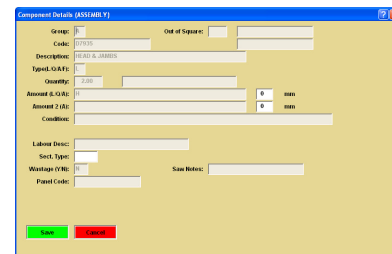
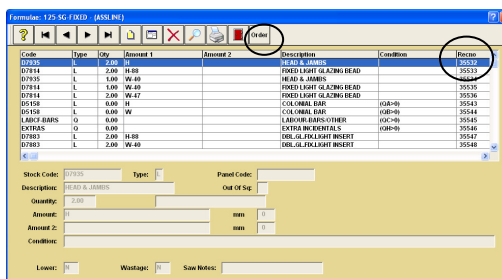
Note – This record number is stored in the formula of the configuration and will help determine the correct entry to be modified

STEP THREE

- Go Setup | Configurations
- Select the configuration to be modified
- Select <Form>



- Select <Order> - this will put all sections in alphabetical order
- Locate Record No (Recno)
- Select View/Modify



- Put the calculation difference into the field beside the formula. (Note - glass will have a height and width formula and any change should be relevant to either height and/or width)

Note – a minus sign will calculate the length shorter, a positive will calculate the length longer. (e.g. 5mm shorter should be -5 and 5mm longer should be 5). The system will calculate the section from the formula and then add or subtract the customised modification.

- SAVE and REPEAT AS REQUIRED

STEP FOUR

- Go back to the quotation item and preview the Item list
- Check that the changes are as required