

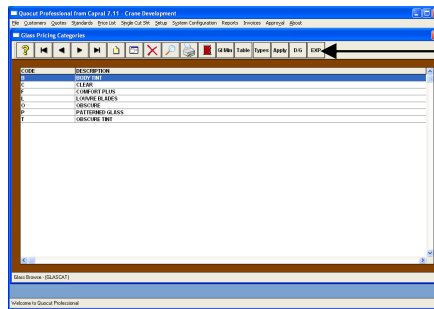
DOUBLE GLAZING

Any double glazed (DG) configuration can be selected and priced to include DG units. It is necessary to ensure DG units have been set up with relevant pricing and nominal thickness so the appropriate unit can be selected at the time of quotation. The nominal thickness determines the filter for individual configurations.

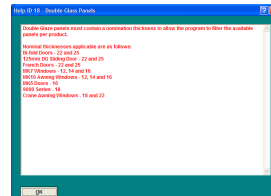
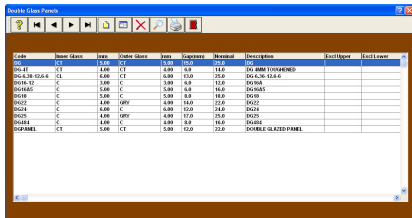
1. Setting up Double Glazed Units

The double glazed units will display on the Glass List and Glass File as a separate glass type. To set up a double glazed unit, proceed as follows:

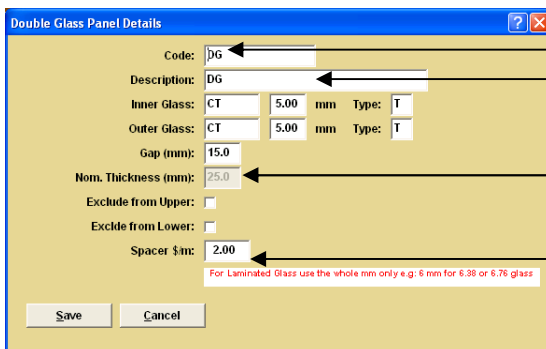
- Select Setup | Glass | Double Glazing



- Select Add



Note – the yellow ‘help’ question mark displays the various nominal thicknesses applicable to individual product.



The code and description should reflect individual units so that when you select a DG unit in your quotation correspond with your requirements.

The nominal thickness calculated will allow the program to present a filtered list of the units applicable to individual configurations.

Add a spacer cost if applicable

- Add the appropriate details into all fields

DOUBLE GLAZING

- Select **Save** to display the pricing screen

- Add the cost in the cost field
 - If the cost is a unit cost – select Each Price and change 'N' to 'Y'.
 - If the cost is a square metre rate, leave Each Price as 'N'
- Add additional DG units as required following the steps above.

2. Using Double Glazed Units in a quotation

To add an item incorporating double glazed units proceed as follows:

- Select Quotes | Current
- Add an item – select a configuration set up with DG
- Complete the appropriate fields
- Enter at the DG Type field to display a look up list of double glazed units
- Select the required unit
- **Save** your item

If you have a window with a transom, it is necessary to enter in a DGU into the second field to enter in your DG unit for the glass units below the transom.