

GLASS MINIMUM THICKNESS DEFAULT

QuoCut Professional allows the user to set a minimum default thickness for each glass type:

- Annealed
- Toughened
- Laminated

- (1) The minimum annealed thickness can be applied to various product groupings.
- (2) The minimum for toughened and laminated is limited to one thickness overall.

NOTE: When the program is installed the minimum glass thickness is preset as follows unless otherwise requested by the client:

- **Windows – 3mm**
- **Doors – 4mm**
- **Showers – 4mm and in the case of Emperor 6mm**

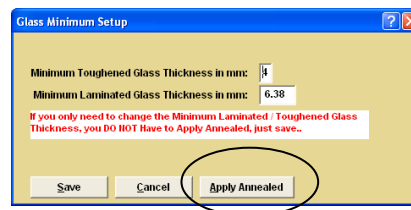
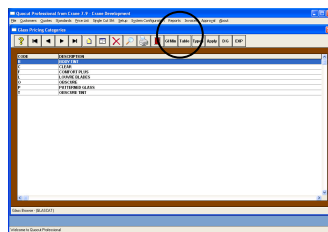
Once the minimum thickness has been set up for each of the glass types, these minimums will be used in the calculation of a quotation unless the user specifies an alternative by selecting the 'Panel/Bay' button within a quote item.

1. Glass minimum for annealed

To set the minimum thickness for annealed glass, proceed as follows:

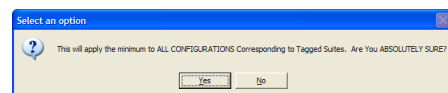
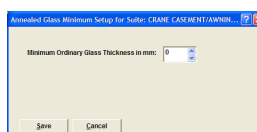
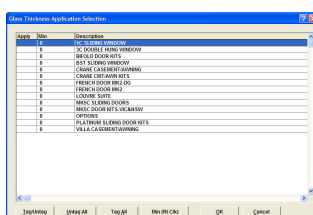
Step One

- Select the menu Setup | Glass
- Select the 'Minimum' button (GI Min)
- Select the 'Minimum' button and then select 'Apply Annealed'



Step Two

- Tag/Untag each product where a specific minimum is required



GLASS MINIMUM THICKNESS DEFAULT

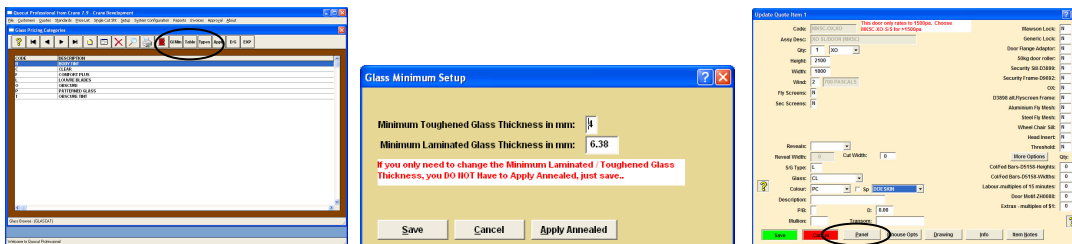
- Right click on the tagged item to select the setup screen
- Use the arrow to select the required minimum and **SAVE**
- Select OK - The user will be prompted to continue
- Select YES to validate the option
- **Repeat Step Two as required**

NOTE – This application will overwrite any minimum set up in options of individual configurations.

2. Glass minimum for toughened and laminated

Set the minimum thickness for toughened and/or laminated glass as follows:

- Select the menu Setup | Glass | Glass Price Categories
- Select the 'Minimum' button
- Modify the minimum toughened and/or laminated thickness as required
- **SAVE**

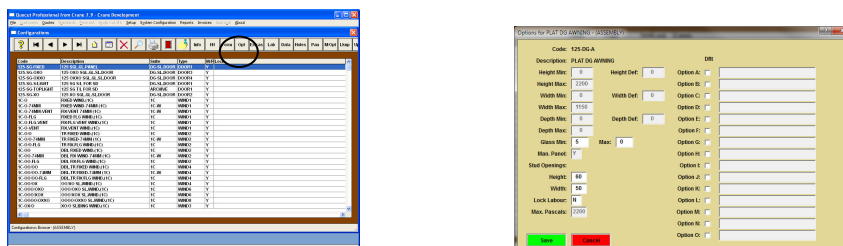


NOTE: The minimum set up applied will be used in calculation of quotations unless otherwise specified for an individual item through the Panel/Bay button.

3. Changing glass minimum for individual configurations

The user has the option to set up a minimum glass thickness manually for individual configurations.

- Select Setup | Configurations
- Highlight the configuration required and select Options (Opt)
- Change the minimum as required and **SAVE**



NOTE – This application will overwrite the default minimum set up in the glass menu option as described in Step Two of Section One above if the global default minimum is activated again