

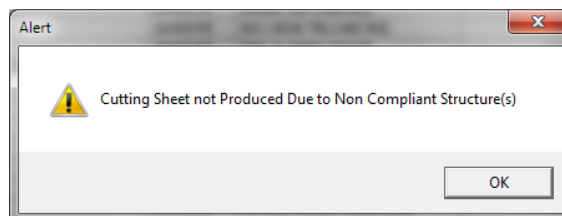
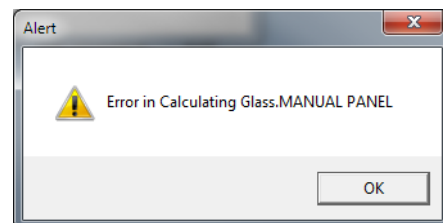
GLASS THICKNESS IN QUOTATIONS

1. Glass thickness

To vary the automatic selection of glass thickness for a quote item, the Panel/Bay button should be selected and a change made to the glass panels either individually or globally using the buttons at the bottom of the screen.

If the Panel/Bay is selected to change the glass thickness of an item and the thickness chosen is less than the requirement (e.g. glass under a transom) an alert will display as a warning that the manual input is in error. No further calculation will continue. The item in question will be zero and no further calculations will be carried out. The Alert will also apply to reports with the additional Alert that a cutting sheet has not been produced due to non compliance. To rectify this you will need to either zap/reset the Panel/Bay to allow automatic calculation or modify the glass thickness as appropriate.

OOS	Panel	Glass Type	Thickness	Ht	Below Tr	Combination
	CENTRE LOWER	C	4.00			
	LEFT FIXED	C	4.00			
	LEFT LOWER	C	4.00			
	LEFT SASH	C	4.00			
	RIGHT FIXED	C	4.00			
	RIGHT LOWER	C	4.00			
	RIGHT SASH	C	4.00			



2. Change to glass type

If a change is made in the quote item glass field which varies to the type of glass that was previously selected in the Panel/Bay screen of an item a warning will pop up to confirm whether the user would like to change the previous setup. The option will be to change the glass type to current selection or to leave the original setup.

