

NETWORKING – PEER TO PEER

1. SETTING UP THE NETWORK

QuoCut Professional has the functionality to network the program. It is recommended you arrange for an IT person to share the local disk and/or folder where the program will be loaded with the correct access rights applied. The program can be loaded on to a server or a main computer. You will also need technical assistance to map the network drives and ensure the network is able to recognise the program.

The networking is set up in the following format to allow temporary files to live on each workstation to enable faster calculation of quotations. The following format should be followed step by step to ensure the networking function operates correctly.

1.1 Step One - Sharing the disk drive or only a folder:

If you do not want to share the local disk drive then you will need to first create a folder called QC and then share this folder with full permissions ensuring any sub folder is also shared with full permissions.

1.2 Step Two – Installing QuoCut:

When installing QuoCut, the path will depend on option selected – see below.

Option (1):

If the local disk drive is fully shared with all users then the program is loaded directly on to the shared drive (e.g. C) and the path then the path would be C:\QC. Note – if the shared drive is a different (e.g. E) then substitute C with the correct drive name.

Option (2):

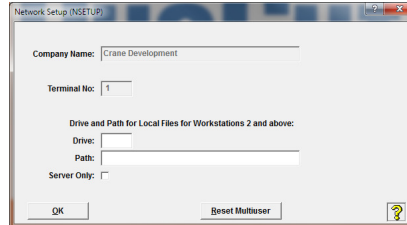
If you have created and shared a QC folder, the path will be C:\QC\QC – In this instance the program is loaded into the sub folder QC.

1.3 Step Three - Main machine or server:

After QuoCut has been loaded and updated on the main machine, proceed as follows:

- Select System Configuration | Multi User

NETWORKING – PEER TO PEER



- Enter the password provided (contact the support line)
- Put in the Drive for the workstations – eg. C: (**see note below**)
- Put in the Path for the workstations – eg. \QC\ (**see note below**)
- **Do not select Server Only for this option of Peer to Peer**
- Select OK

Note – the temporary files will live on the drive of the workstation as designated above, which assists in speed and calculation. This process is saying that the temporary files will be set up on the local disk drive of the individual workstation (which is usually the C drive) and will automatically create a folder called QC for the workstation files when you individually select setup workstation on all other computers, which are part of your network. The main databases will live in a QC folder on the server.

1.4 Step Four – Setting up Workstations:

- Map a network drive to the main machine or server – e.g. Q
- The machine name will be
 - Q:\(machine name) – if the C drive is shared, or
 - Q:\(machine name)\QC – if the folder QC has been shared
- Select Reconnect at Logon and create correct path
- Create a shortcut to QC.EXE on the main machine or server
- Edit the properties of the shortcut to make the target read as follows:

First workstation:

Target: Q:\QC\QC.EXE 2

Start In: Q:\QC

Second workstation:

Target: Q:\QC\QC.EXE 3

Start In: Q:\QC

Repeat the process for additional workstations – the number after QC.EXE represents the workstation number. You cannot use the same number twice. Each number must be more than 1 and less than 99 and should be consecutive.

Note: The mapped drive points to the server or main machine whereas the local files live on the C drive of each workstation as set up in 1.3 above.

NETWORKING – PEER TO PEER

1.5 Activating the workstation files:

- Open the program from the desktop of each workstation
- Select System Configuration | Multi User (password as provided)
- Select Setup Work Station button (this is done only the first time at setup but can be done manually if required at any time)
- The system will activate the program

Note – after the initial setup the workstation will automatically ask you to update if any changes have been made to the main program. Answer YES.

2. **LIBRARY AND SETUP DATA CHANGES**

To edit any of the data files you can only perform this function on the main machine.

After editing files each Workstation will need to be updated so that the changed data will be transferred to the workstation and ensure all quotations will use the correct data. On opening the program on a workstation it should indicate a need to be updated. ANSWER YES to allow the data to update.

Note – If a workstation does not ask to update it should be done manually – see Step 1.5 above.

3. **DEACTIVATING NETWORKING FUNCTION**

To deactivate the network function, go to System Configuration | Multi User and select Reset Multiuser. This will mean that the workstations will no longer be able to function correctly.

QuoCut Professional Support:
07 4724 6177