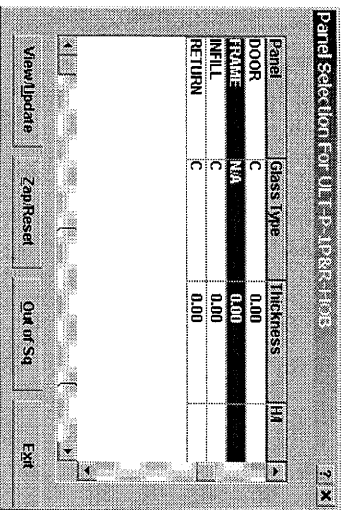


# OUT OF SQUARE INPUTS FOR QUOCUT

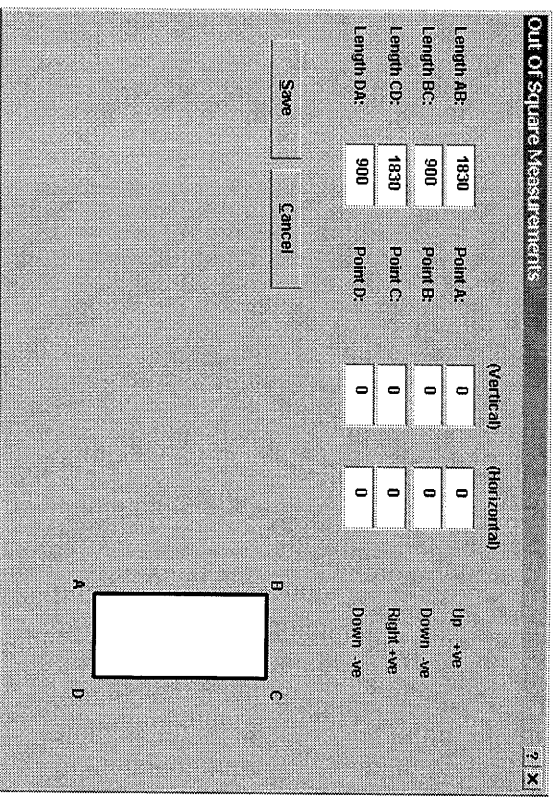
## OUT OF SQUARE MEASUREMENTS WINDOW

Example: Out of square frame



→ Highlight the "Frame" row.

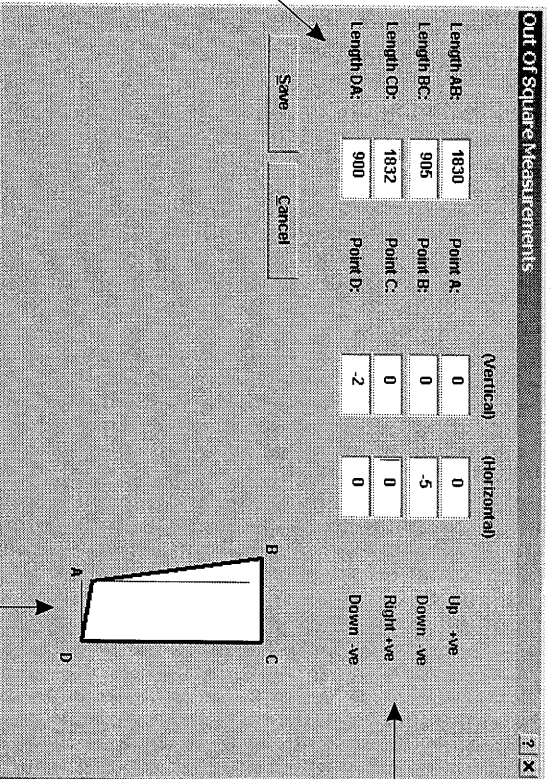
By pressing the "Out of Sq" button, the Frame "Out Of Square Measurements" window is displayed.



The above shows the "Out Of Square Measurements" window for the showers frame. *Note: The figures have not been altered to create an out of square frame.*

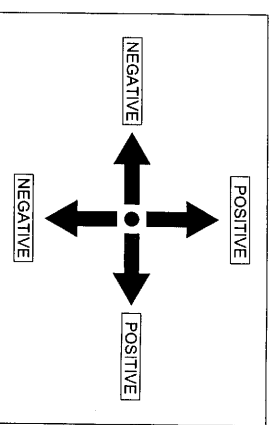
It is recommended to enter the inputs for the frame being out of square in the below order;

- Firstly, from the "Out Of Square" inputs pages created for the shower, place in the AB, BC, CD and DA lengths to specify the size the frame needs to be.
- Secondly, shift the points necessary to create the required frame shape.



Enter lengths in first.

Move the necessary points to create the required frame shape. Used the point direction guide below to move the points in the correct direction.



- Check the shape of the panel to ensure it is correct and then save.
- Proceed with the other panels in the shower configuration.