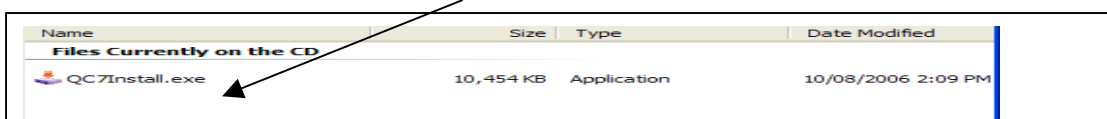


## INSTALLING QUOCUT EXPRESS

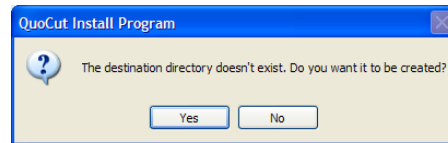
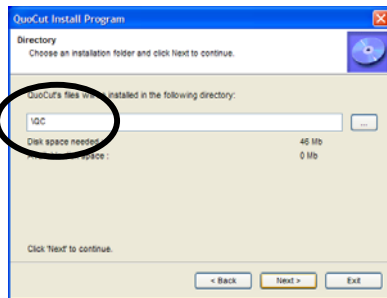
The following instructions will install QuoCut Express onto a computer – **STEP ONE AND TWO MUST BE PERFORMED.**

### **STEP ONE**

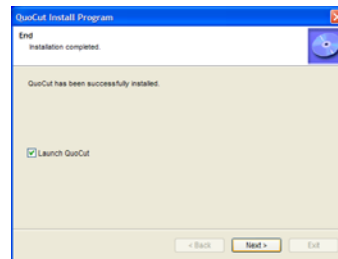
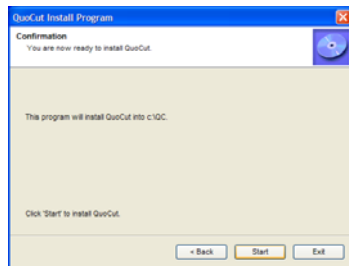
- Insert CD
- Go to 'My Computer'
- Select the CD drive and double click to display files
- Double click on the icon QC7Install.exe



- An install screen will display – select <Next>
- **This screen will indicate where the file will be saved**



- **CHANGE** the path to **C:\QC** and then select <Next>
- Select <Yes> to the prompt 'The destination directory doesn't exist. Do you want it to be created?'
- A confirmation screen will confirm the path - select <Start>



- A screen will display indicating the installation is in progress
- When the installation has been successfully installed – select <Next>
- The final screen will have an option to Exit - select <Exit>
- The program will now automatically launch and open QuoCut and automatically create an icon on the desktop to open the program.



## INSTALLING QUOCUT EXPRESS

### STEP TWO

*Once the program has been installed, it is imperative to perform an update (QCUPD), colour import (QCCOLGRP) and library import (LIB1) to allow the program to have the correct update databases.*

*If Step (a) does not work YOU MUST NOT PROCEED ANY FURTHER – Please contact the support line – 07 4724 6177 for assistance.*

- (a) Go to File | Update Control panel – select Upd to update the databases
- (b) Go to File | Update Control panel – select Col to update the colour file
- (c) Go to File | Update Control panel – select Lib to update the product file

*Note – Regular updates are available on the internet – [www.ssq.com.au/quocutpro](http://www.ssq.com.au/quocutpro) - select LATEST\_VERSION*

.....

## VISTA / WINDOWS 7 OPERATING SYSTEM INSTRUCTIONS

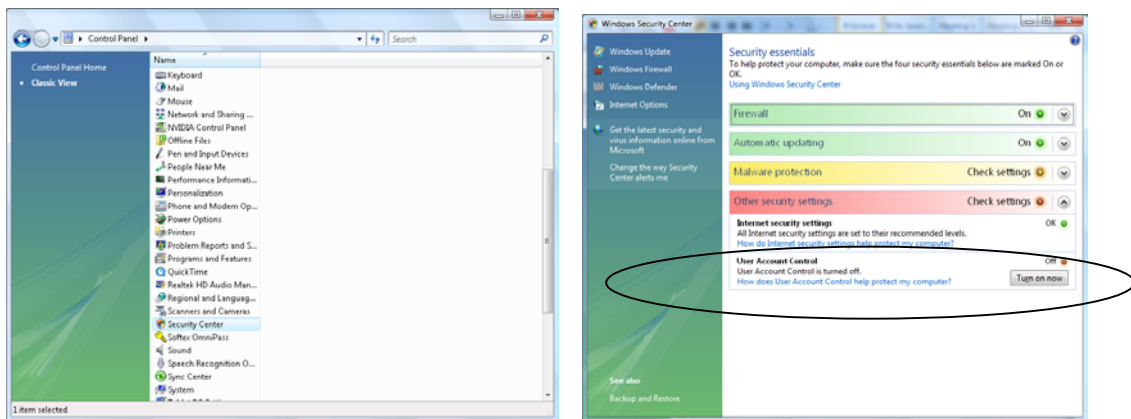
*If you have a Vista OR Windows 7 operating system you may need to turn off the User Account Control in order to be able to use the update function of the program.*

*To check to see if your user control is turned on or off:*

- Go to Start at the bottom of your computer and select the Control Panel (Classic View)
- Select Security Centre
- Select continue if asked to do so

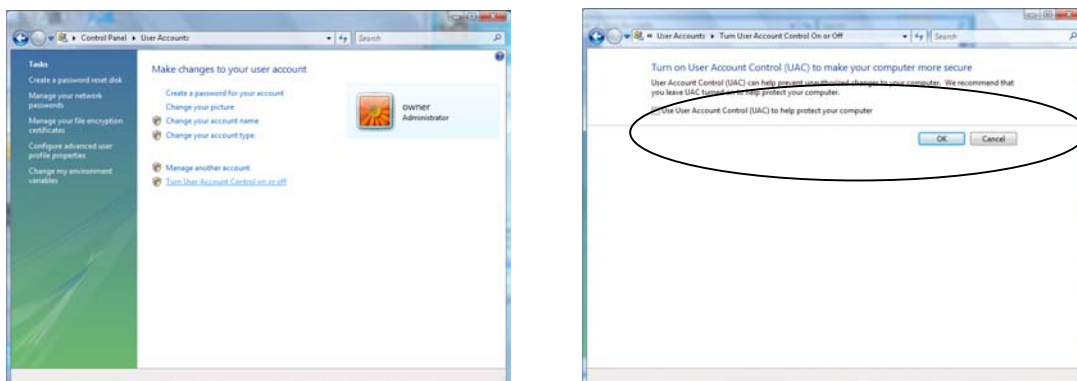
## INSTALLING QUOCUT EXPRESS

**Note – when this control is turned on it prevents the use of update executable files, which are required to update QuoCut. The only way the update can be performed if the controls are turned on is through a DOS prompt. Please contact the support line for assistance.**



**Look at User Account Control – this will say either ‘On’ or ‘Off’ – if it is ON then proceed as follows:**

- **Go to Start at the bottom of your computer and select Control Panel (Classic View)**
- **Select User Accounts**
- **Select ‘Turn User Account Control on or off’ – Continue**
- **Unselect ‘Use User Account Control’**
- **Select OK**



**You will need to restart your computer.**